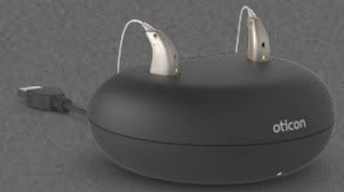


Technical data sheet

miniRITE R

60 85 100 105



	Oticon Opn S 1	Oticon Opn S 2	Oticon Opn S 3	
Speech Understanding	OpenSound Navigator™	Level 1	Level 2	Level 3
	- Balancing power effect	100%	50%	50%
	- Max. noise removal	9 dB	5 dB	3 dB
	OpenSound Optimizer™	•	•	•
	Speech Guard™ LX	Level 1	Level 2	Level 3
	Spatial Sound™ LX	4 estimators	2 estimators	2 estimators
	Soft Speech Booster LX	•	•	•
Sound Quality	Speech Rescue™ LX	•	•	•
	Clear Dynamics	•	•	-
	Spatial Noise Management	•	•	-
	Fitting Bandwidth*	10 KHz	8 KHz	8 KHz
	Processing Channels	64	48	48
Listening Comfort	Bass Boost (streaming)	•	•	•
	Transient Noise Management	4 configurations	On/Off	On/Off
	Feedback shield LX	•	•	•
Personalisation & Optimising Fitting	Wind Noise Management	•	•	•
	YouMatic™ LX	3 configurations	2 configurations	1 configuration
	Fitting Bands	16	14	12
	Multiple Directionality Options	•	•	•
	Adaptation Management	•	•	•
	Oticon Firmware Updater	•	•	•
Connecting to the World	Fitting Formulas	VAC+, NAL-NL1 + 2, DSL v5.0	VAC+, NAL-NL1 + 2, DSL v5.0	VAC+, NAL-NL1 + 2, DSL v5.0
	Stereo streaming (2.4 GHz)	•	•	•
	Oticon ON App	•	•	•
	ConnectClip	•	•	•
	Remote Control 3.0	•	•	•
	TV Adapter 3.0	•	•	•
	Phone Adapter 2.0	•	•	•
Tinnitus SoundSupport™	•	•	•	

* Bandwidth accessible for gain adjustments during fitting

Operating conditions

Temperature: +5°C to +40°C
Relative humidity: 5% to 93%, non-condensing

Storage and transportation conditions

Temperature and humidity should not exceed the following limits for extended periods during transportation and storage.

Transport:

Temperature: -20°C to +60°C
Relative humidity: 5% to 93%, non-condensing

Storage:

Temperature: -20°C to +30°C
Relative humidity: 5% to 93%, non-condensing

Oticon Opn S™ miniRITE R is a discreet style powered by rechargeable lithium-ion battery. The inductive charger secures reliable and fast charging within 3 h. for a full charge.

miniRITE R features telecoil and a convenient double pushbutton.

OpenSound Navigator™ helps users to select and understand speech in all types of environments by balancing the sound sources and attenuating noise.

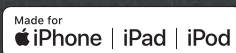
OpenSound Optimizer™ improves users listening experience and comfort by blocking feedback and secure the targeted amplification of sound sources.

TwinLink™ wireless technology combines binaural communication and 2.4 GHz connectivity with stereo streaming directly from digital devices.

Oticon Opn S is built on the powerful Velox S™ platform which has a programmable firmware architecture, supporting future performance updates.

General features:

- Digital Programmable
- Automatic and Manual Volume Control
- Maximum Output Control System
- MPO-Maximum Power Output
- GC-Gain Control
- AGC-Automatic Gain Control
- Noise Reduction
- Feedback Management
- Dual Microphone
- FM Compatible (with Telecoil)
- 4 Programs

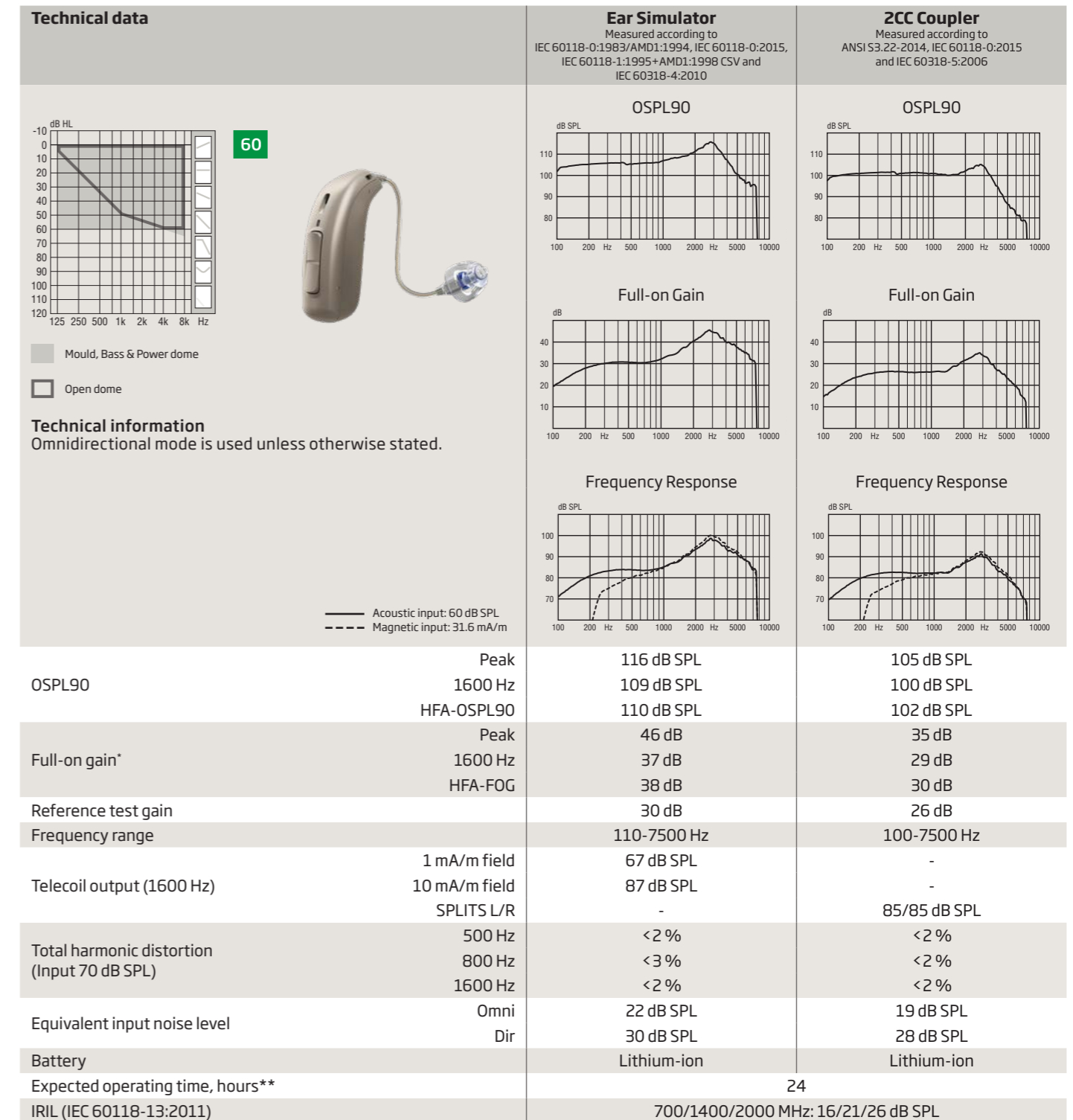
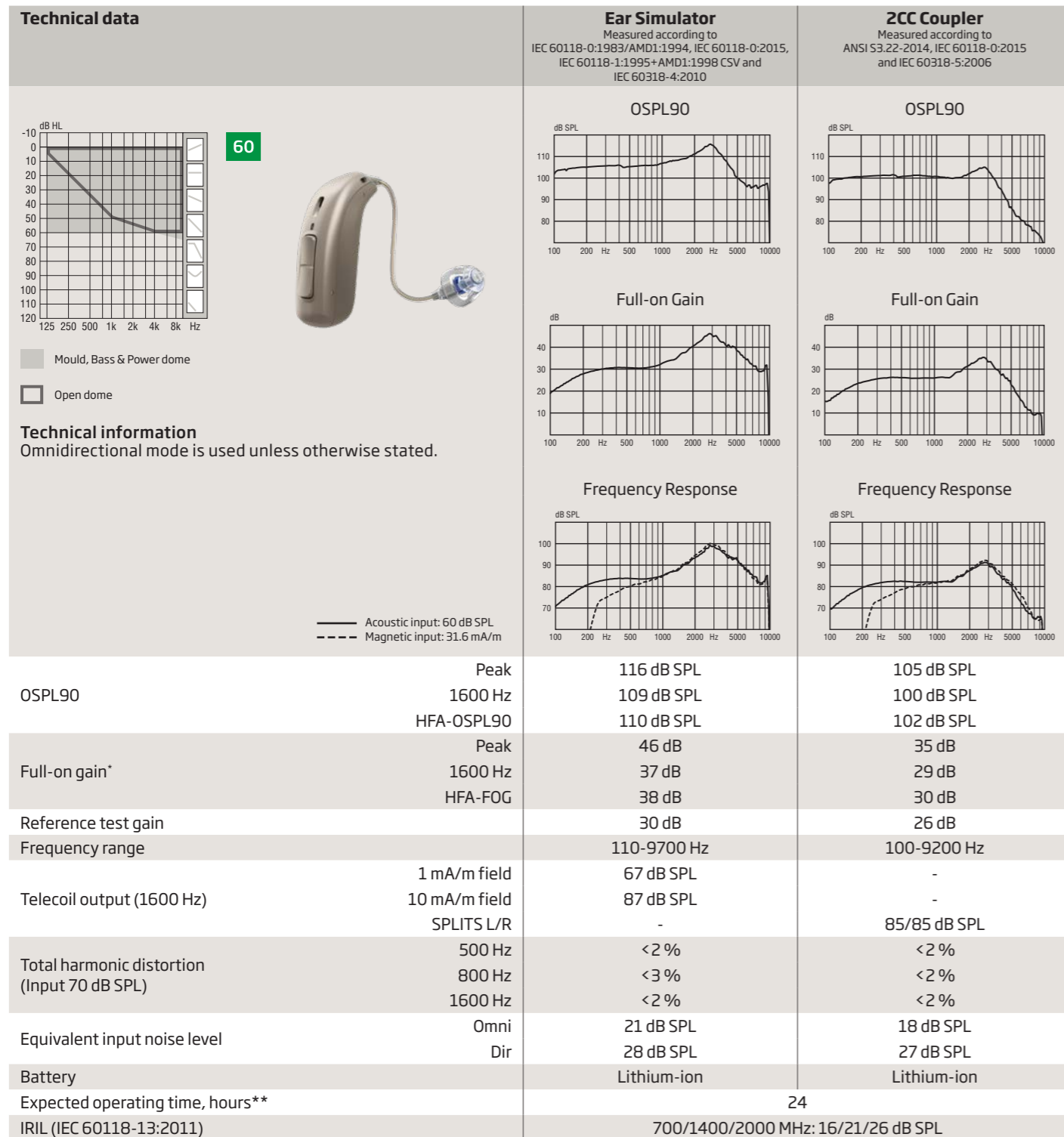


Oticon Opn S 1

miniRITE R 60

Oticon Opn S 2 & 3

miniRITE R 60



* Measured with the gain control of the hearing aid set to its full-on position minus 20 dB and with an input SPL of 70 dB. This is to obtain a gain response equal to the full-on gain response from e.g. IEC 60118-0+A1:1994 but without influence of feedback.

** Expected operating time for rechargeable battery depends on use pattern, active feature set, hearing loss, sound environment, battery age and use of wireless accessories.

* Measured with the gain control of the hearing aid set to its full-on position minus 20 dB and with an input SPL of 70 dB. This is to obtain a gain response equal to the full-on gain response from e.g. IEC 60118-0+A1:1994 but without influence of feedback.

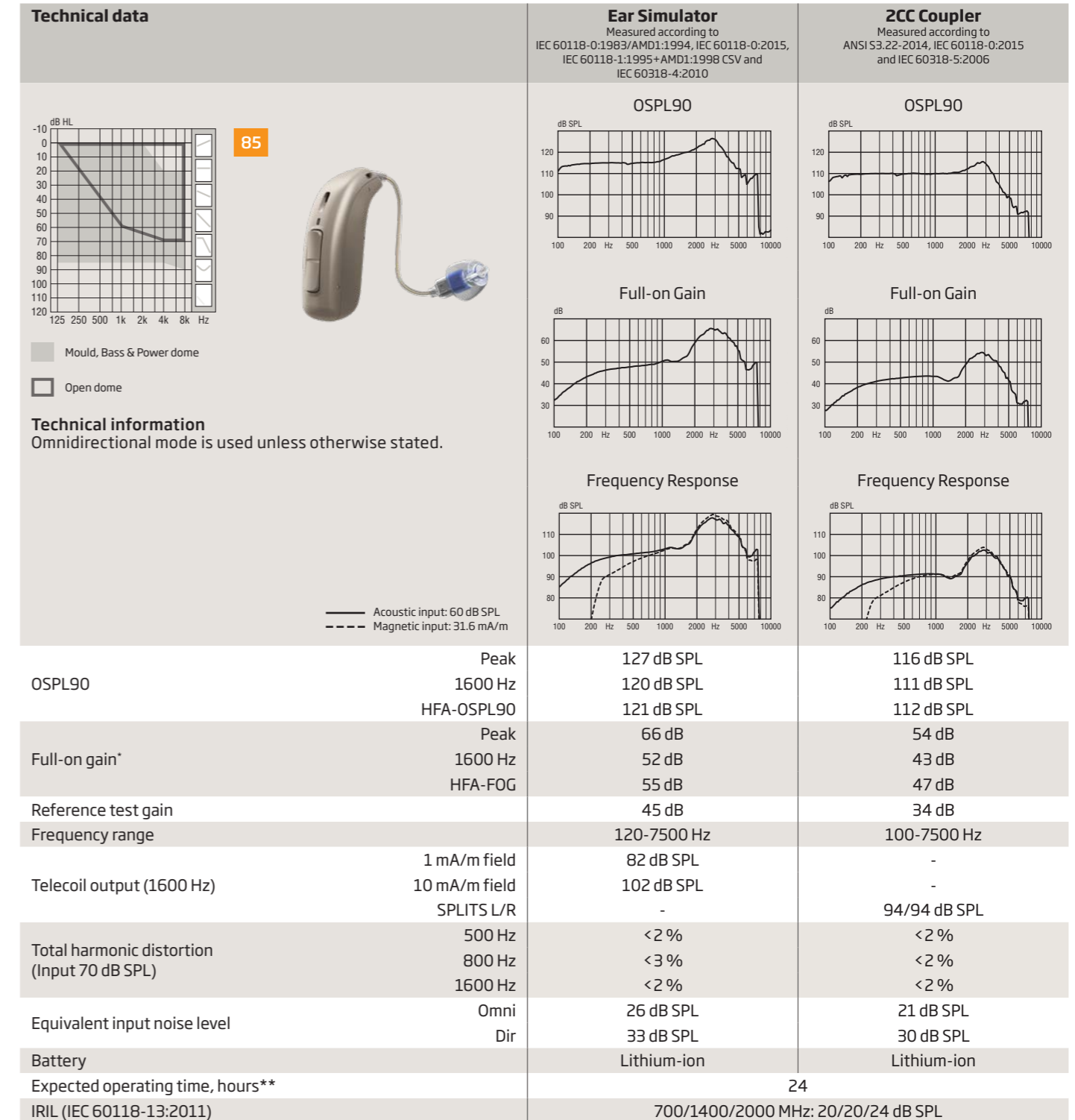
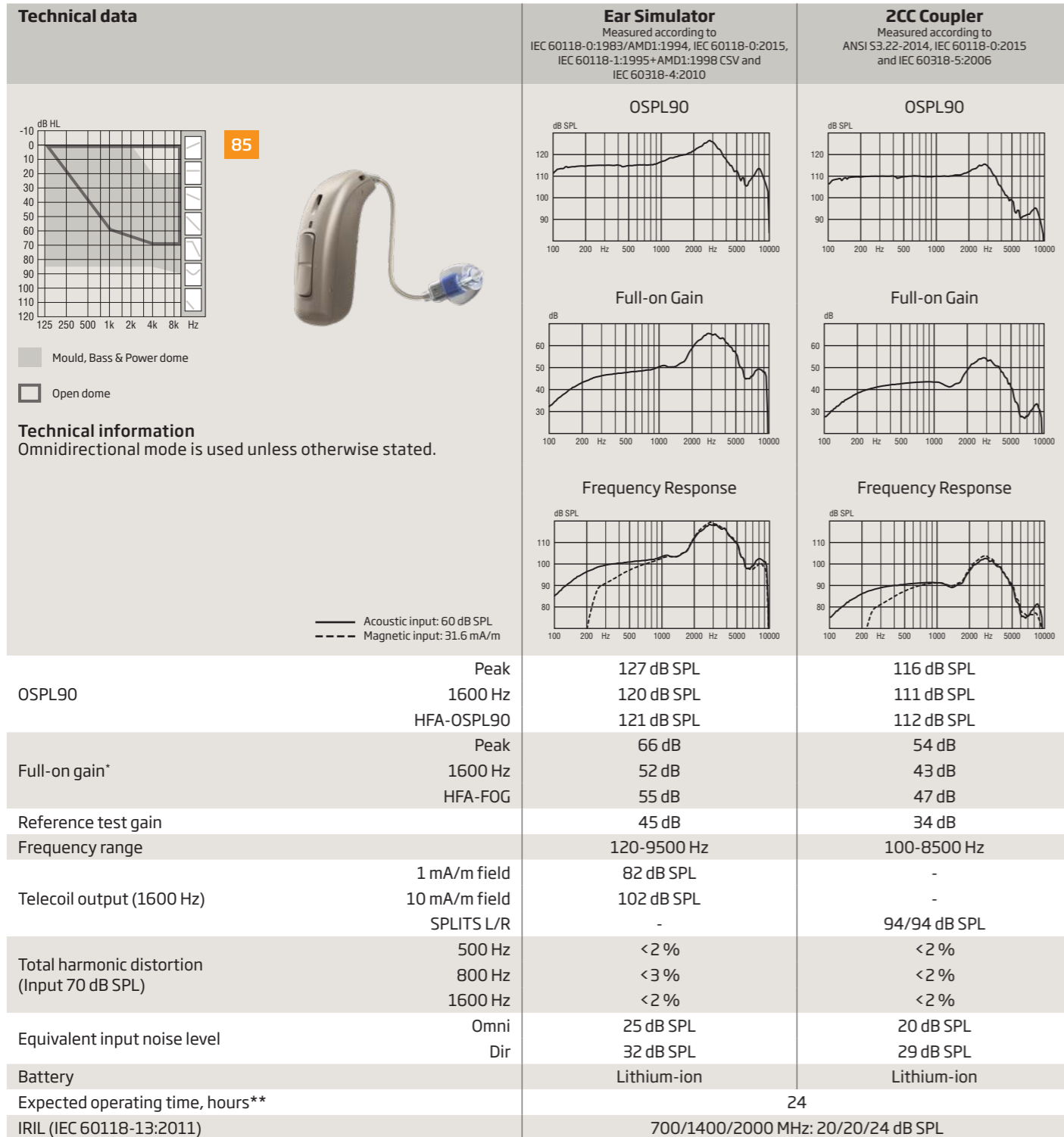
** Expected operating time for rechargeable battery depends on use pattern, active feature set, hearing loss, sound environment, battery age and use of wireless accessories.

Oticon Opn S 1

miniRITE R 85

Oticon Opn S 2 & 3

miniRITE R 85



* Measured with the gain control of the hearing aid set to its full-on position minus 20 dB and with an input SPL of 70 dB. This is to obtain a gain response equal to the full-on gain response from e.g. IEC 60118-0+A1:1994 but without influence of feedback.

** Expected operating time for rechargeable battery depends on use pattern, active feature set, hearing loss, sound environment, battery age and use of wireless accessories.

* Measured with the gain control of the hearing aid set to its full-on position minus 20 dB and with an input SPL of 70 dB. This is to obtain a gain response equal to the full-on gain response from e.g. IEC 60118-0+A1:1994 but without influence of feedback.

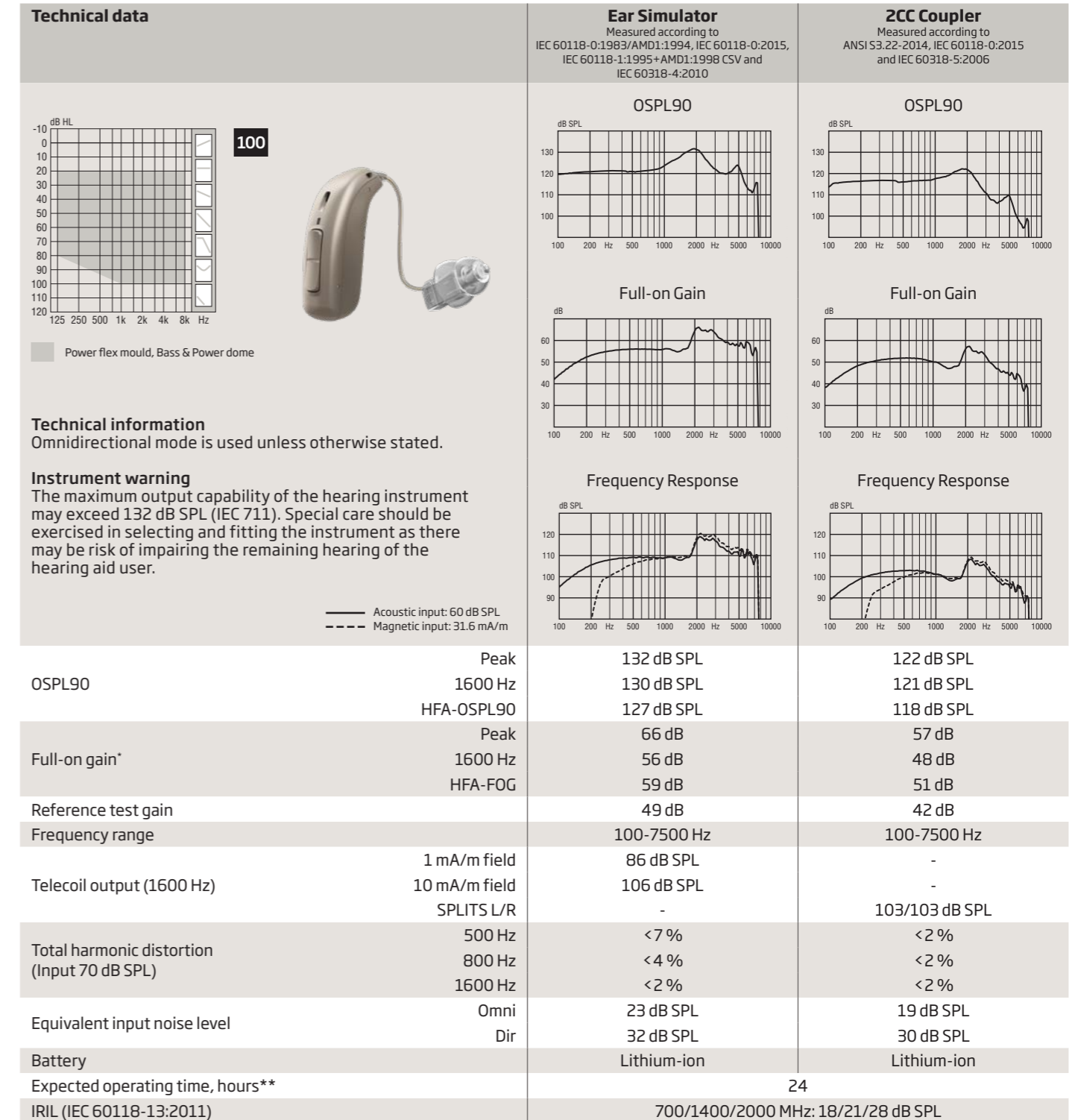
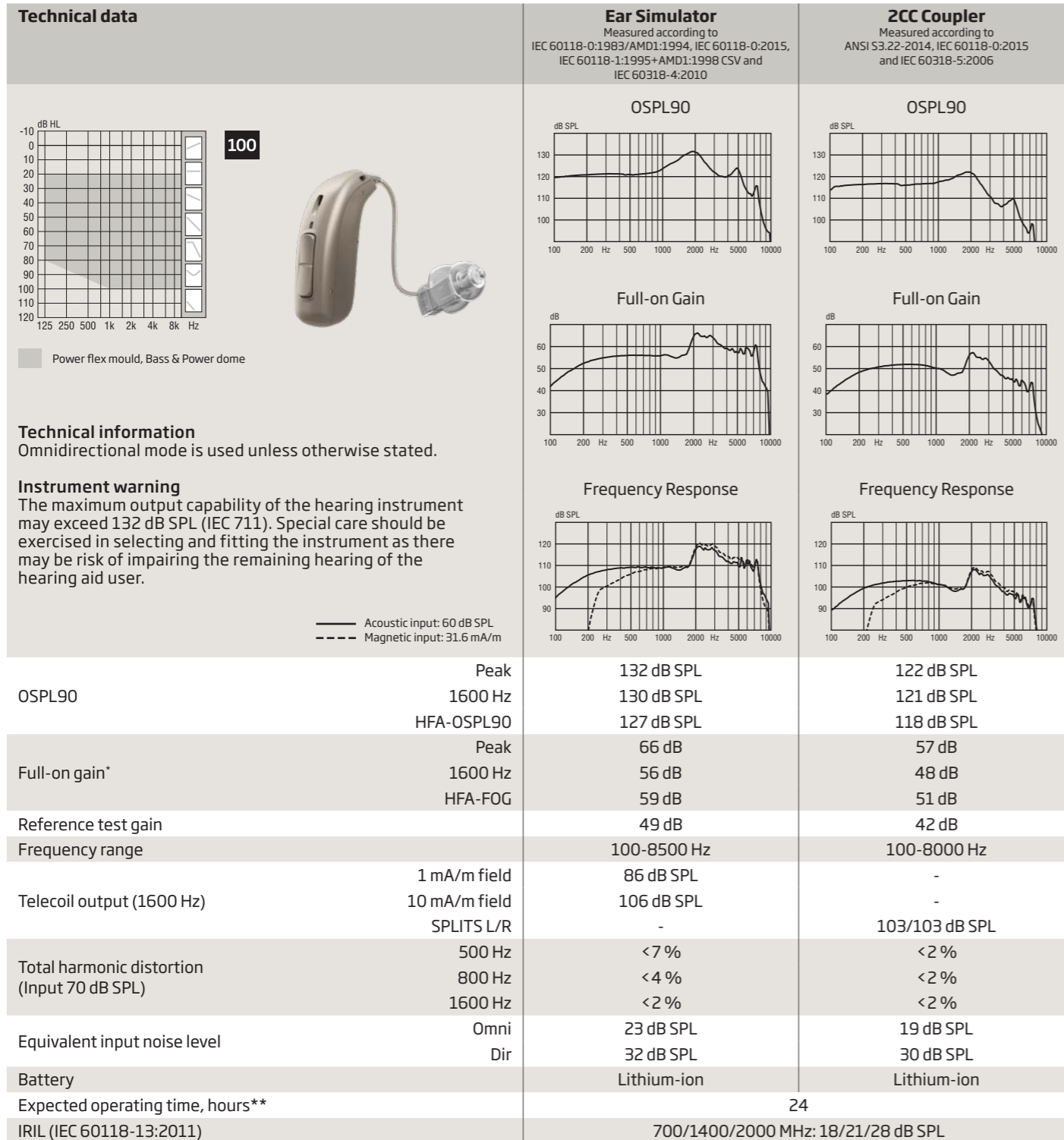
** Expected operating time for rechargeable battery depends on use pattern, active feature set, hearing loss, sound environment, battery age and use of wireless accessories.

Oticon Opn S 1

miniRITE R 100

Oticon Opn S 2 & 3

miniRITE R 100



* Measured with the gain control of the hearing aid set to its full-on position minus 20 dB and with an input SPL of 70 dB. This is to obtain a gain response equal to the full-on gain response from e.g. IEC 60118-0+A1:1994 but without influence of feedback.

** Expected operating time for rechargeable battery depends on use pattern, active feature set, hearing loss, sound environment, battery age and use of wireless accessories.

* Measured with the gain control of the hearing aid set to its full-on position minus 20 dB and with an input SPL of 70 dB. This is to obtain a gain response equal to the full-on gain response from e.g. IEC 60118-0+A1:1994 but without influence of feedback.

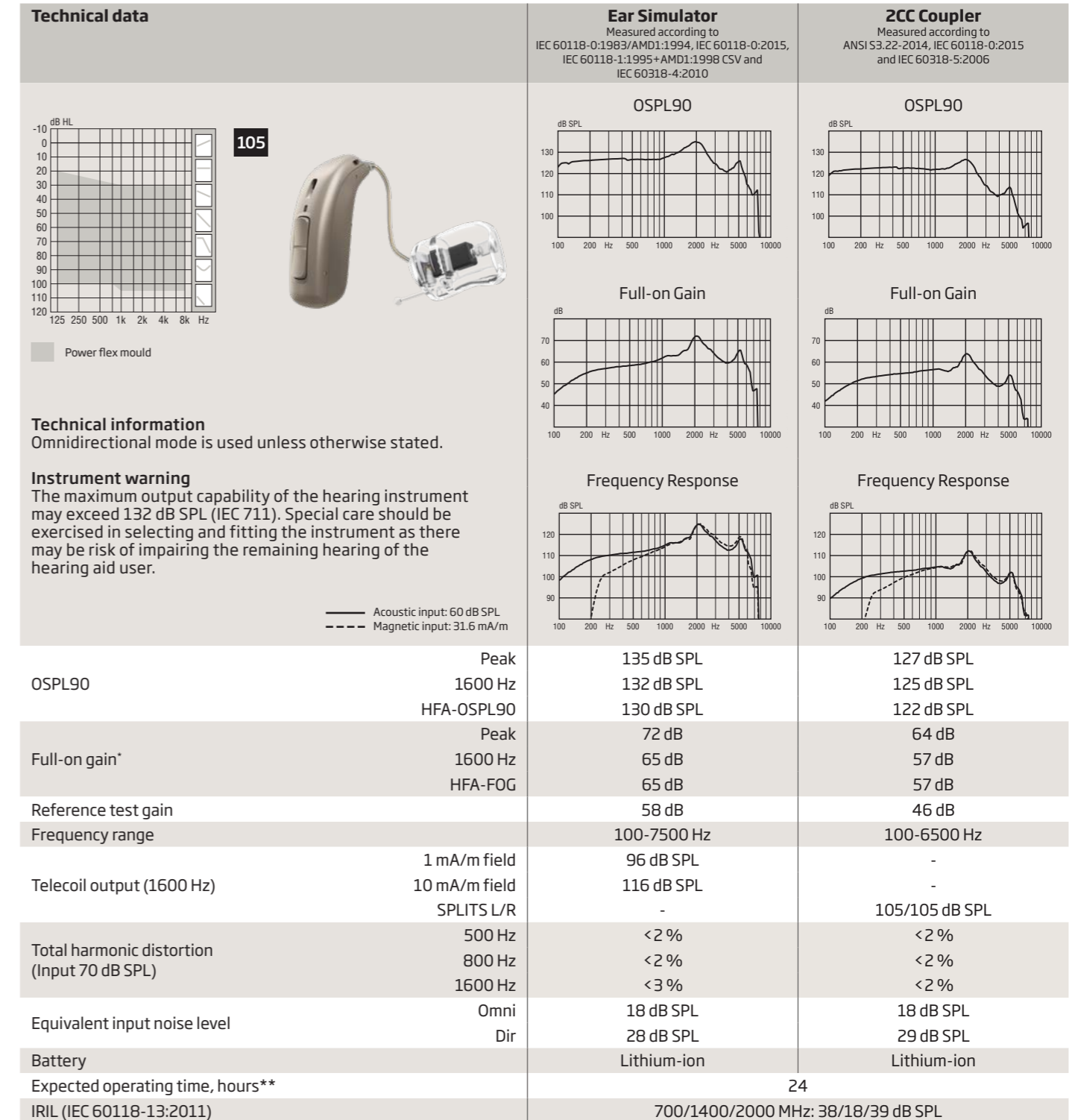
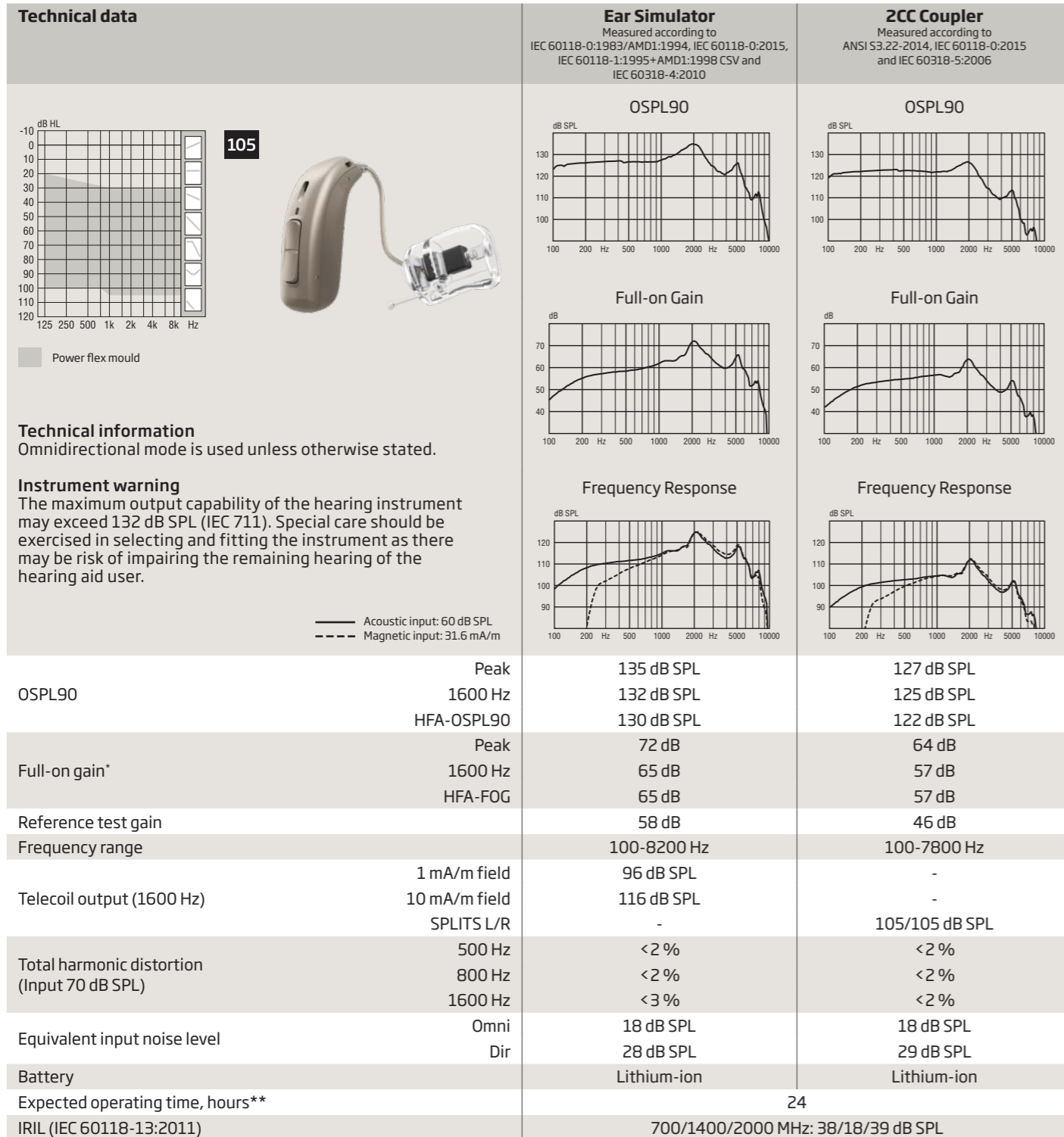
** Expected operating time for rechargeable battery depends on use pattern, active feature set, hearing loss, sound environment, battery age and use of wireless accessories.

Oticon Opn S 1

miniRITE R 105

Oticon Opn S 2 & 3

miniRITE R 105



* Measured with the gain control of the hearing aid set to its full-on position minus 20 dB and with an input SPL of 70 dB. This is to obtain a gain response equal to the full-on gain response from e.g. IEC 60118-0+A1:1994 but without influence of feedback.

** Expected operating time for rechargeable battery depends on use pattern, active feature set, hearing loss, sound environment, battery age and use of wireless accessories.

* Measured with the gain control of the hearing aid set to its full-on position minus 20 dB and with an input SPL of 70 dB. This is to obtain a gain response equal to the full-on gain response from e.g. IEC 60118-0+A1:1994 but without influence of feedback.

** Expected operating time for rechargeable battery depends on use pattern, active feature set, hearing loss, sound environment, battery age and use of wireless accessories.

Charger 1.0

miniRITE R

The charger is designed for recharging miniRITE R, part of Oticon Opn S™ families. The charger is based on inductive technology. It wirelessly charges the hearing aids within three hours. A magnetic connection secures the hearing aids always stay in the charger. The charger is designed to simplify everyday recharging activities with a few, easy actions.

Charging

- Designed to make the most typical daily routine of charging smooth and simple.
- Simply take off the hearing aid and insert it in the charger - no lid to open. Operation so simple it can be done using only one hand.
- The hearing aid automatically starts charging when placed in the charger and turn ON automatically when removed from the charger.
- Charge every night and hearing aid will be fully charged when needed during day time.

Intuitive to decode with few simple LED messages directly on the hearing aid:

- Red = Charging
- Green = Fully charged

Offering short charging times. If the hearing aid is completely drained, the normal charging times are:

- 3 h = Fully charged
- 1 h = 50% charged
- 0.5 h = 25% charged

Product facts

- Inductive charging
- Power ON/OFF LED indicator on charger
- The charger comes with a fixed cable
- High stability due to rubber feet
- Soft, round shapes - easy to clean
- Soft pouch for travelling included



* Power plug will vary from country to country

Charger 1.0

miniRITE R

Technical data: Charger	
Name	Charger 1.0, Oticon miniRITE R
Designed for/compatibility	Oticon Opn S, Oticon Opn Play: miniRITE R
Dimensions	Ø95 mm /total height of 39 mm
Weight	140 grams
Colour	Black
Power supply plug	USB A
Status indicator	LED on charger. Indicates Charger ON/OFF status LED on hearing instrument. Indicates charging mode
Charging time of hearing instruments	Max 3 hours depending on initial state of the battery (Temperature: +5 °C to +35 °) Max 4 hours depending on initial state of the battery (Temperature: +35 °C to +40 °)
Power source	Supplied power supply unit
Input voltage	5 V DC
Input current	< 0.2 A (charging two hearing instruments) <10mA stand-by (no hearing instruments inserted)
Cable	Fixed mounted cable / 150 cm
Connected to external equipment	When connected to external equipment plugged into a wall outlet, this equipment must comply with IEC-62368 (or IEC-60065, IEC-60950 until June 20, 2019) or equivalent safety standards.
Conditions of use	
Operating conditions	Temperature: +5 °C to +40 °C Relative humidity: 5 % to 93 %, non-condensing
Storage and transportation conditions	Temperature: -25 °C to +70 °C Relative humidity: 5 % to 93 %, non-condensing
Atmospheric pressure	700 hPa to 1060 hPa
Technical data: Power supply unit	
Power supply unit	AN05x-050A
Input voltage	100 -240 V AC
Input current	0.2 A
Input frequency	50-60 Hz
Output voltage	5 V DC
Output current	1 A



Oticon A/S
Kongebakken 9
2765 Smørum
Denmark
+45 3917 7100

